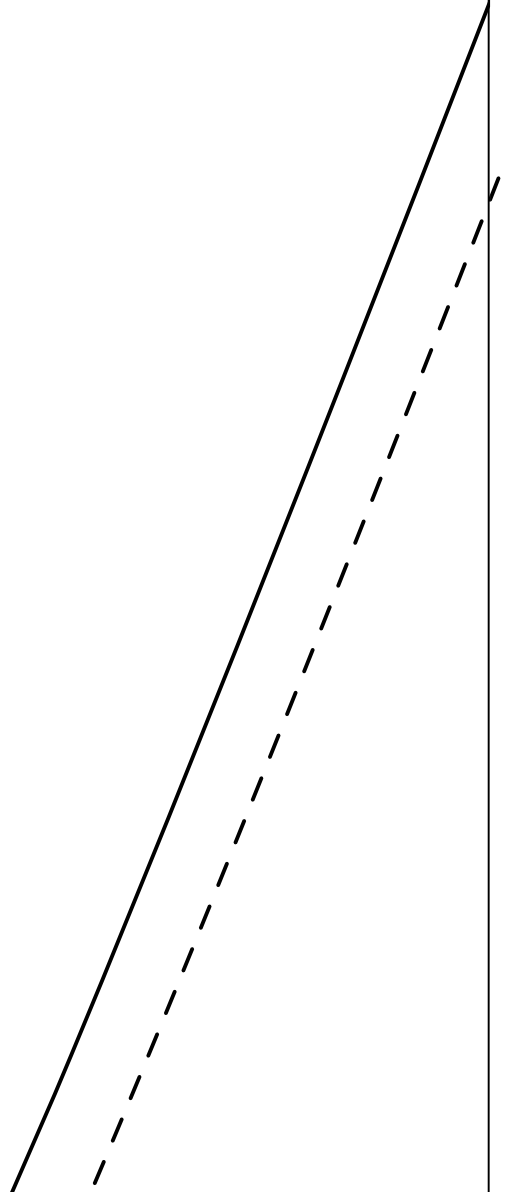
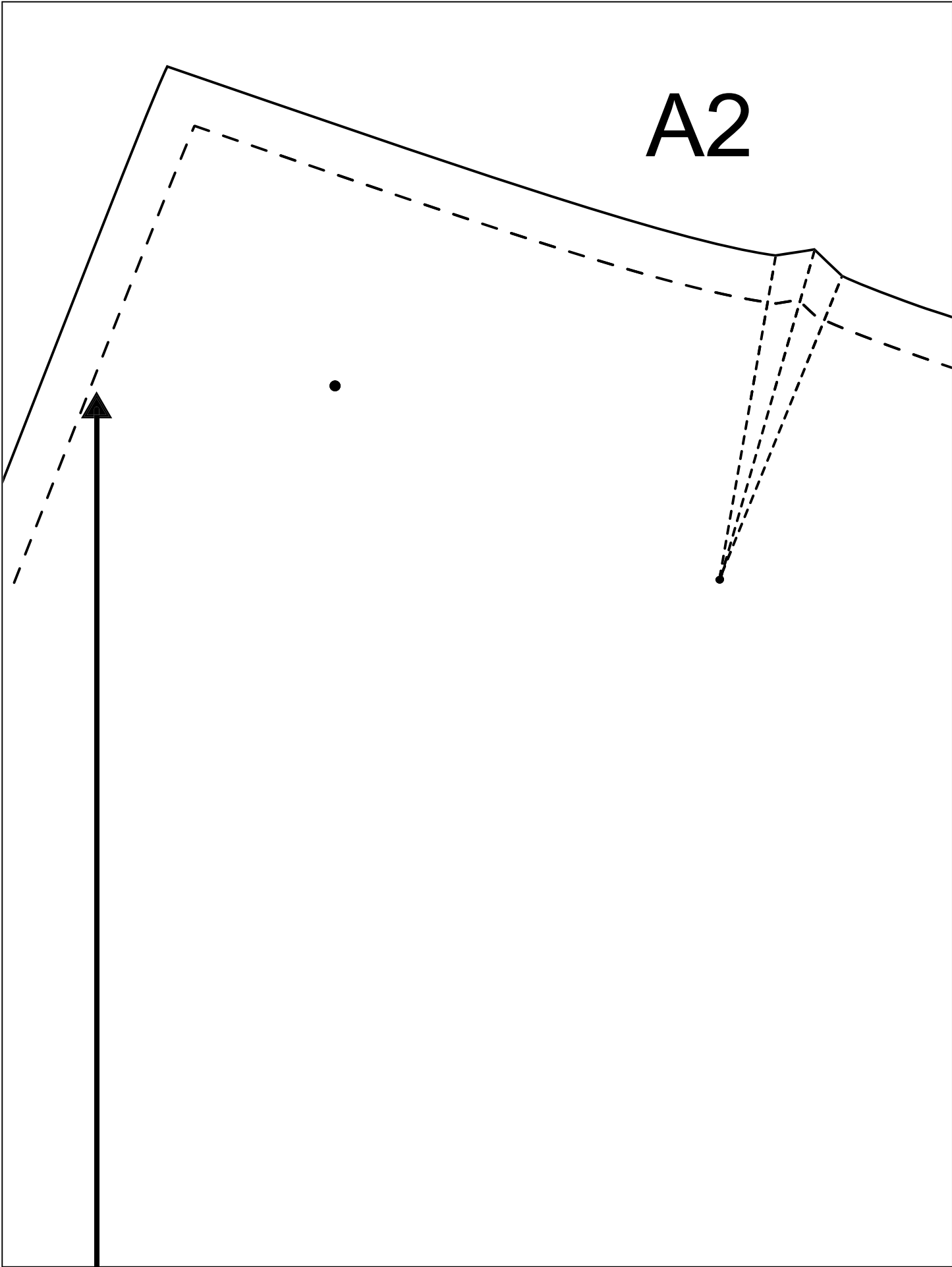


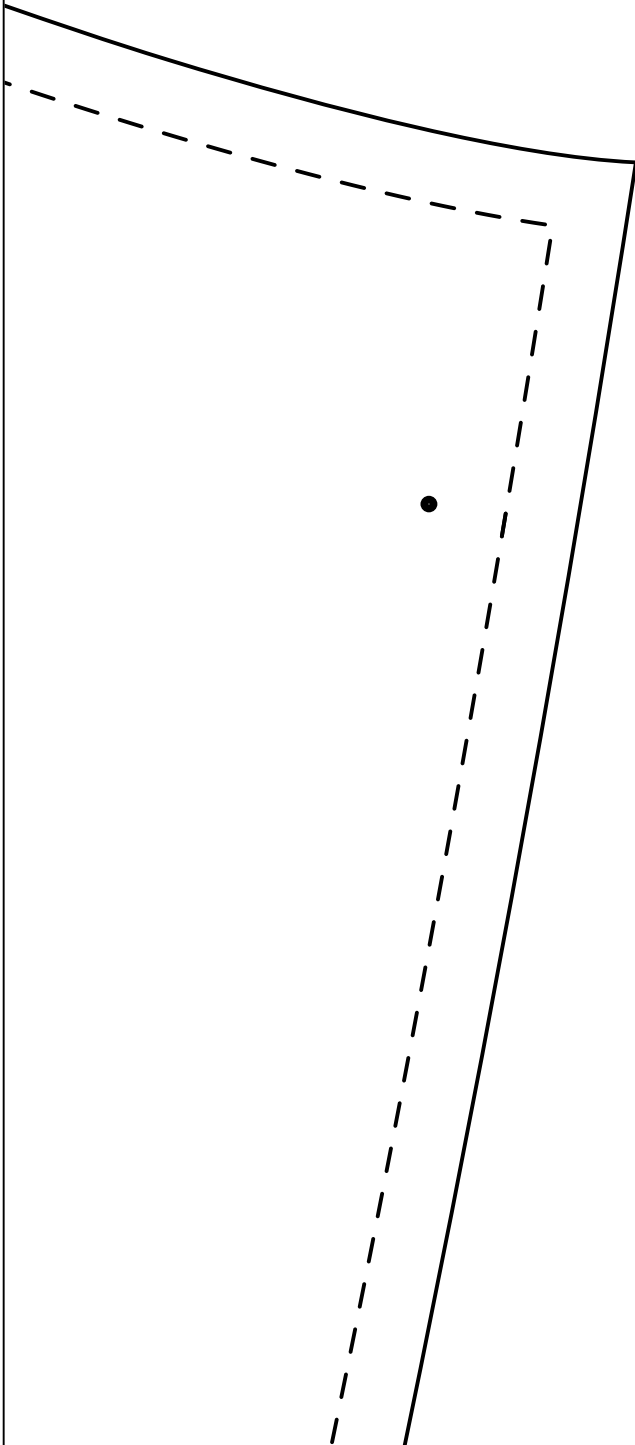
A1



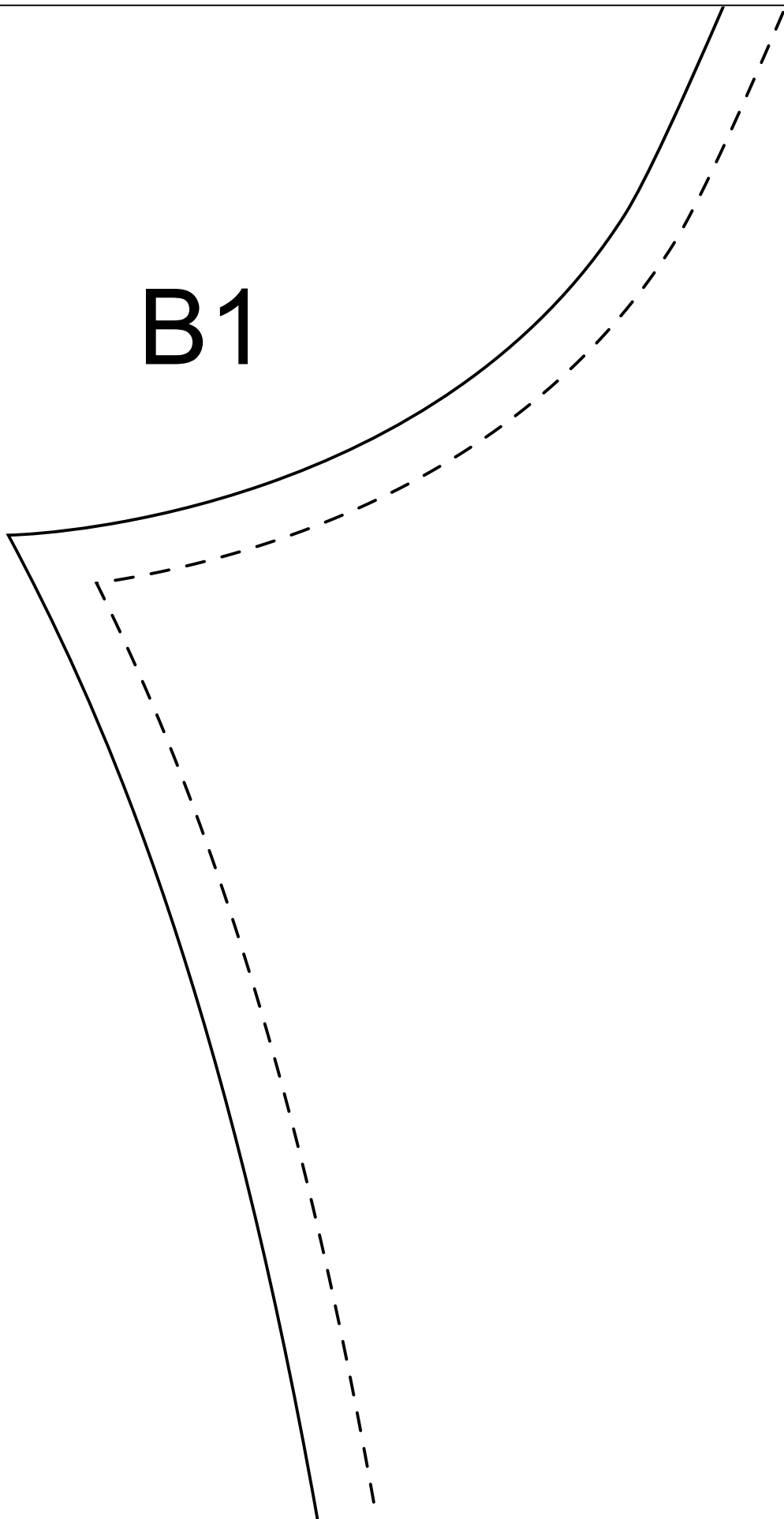
A2



A3

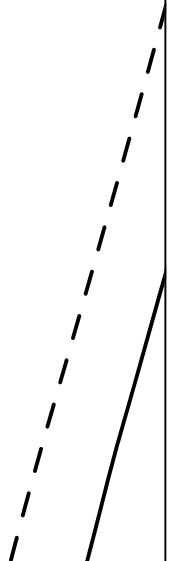


**B1**



ZIPPER PANTS  
BACK  
CUT 2

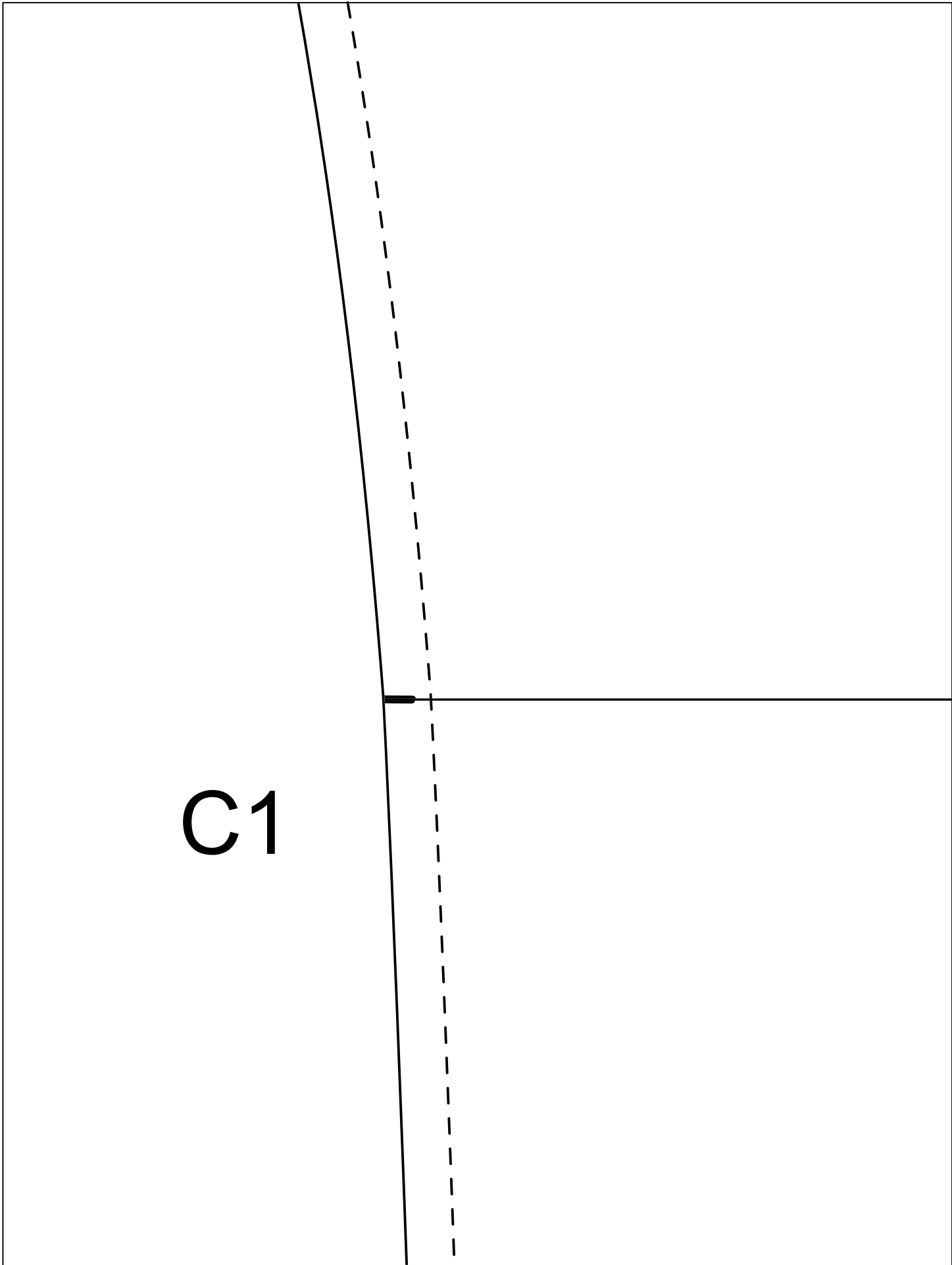
**B2**



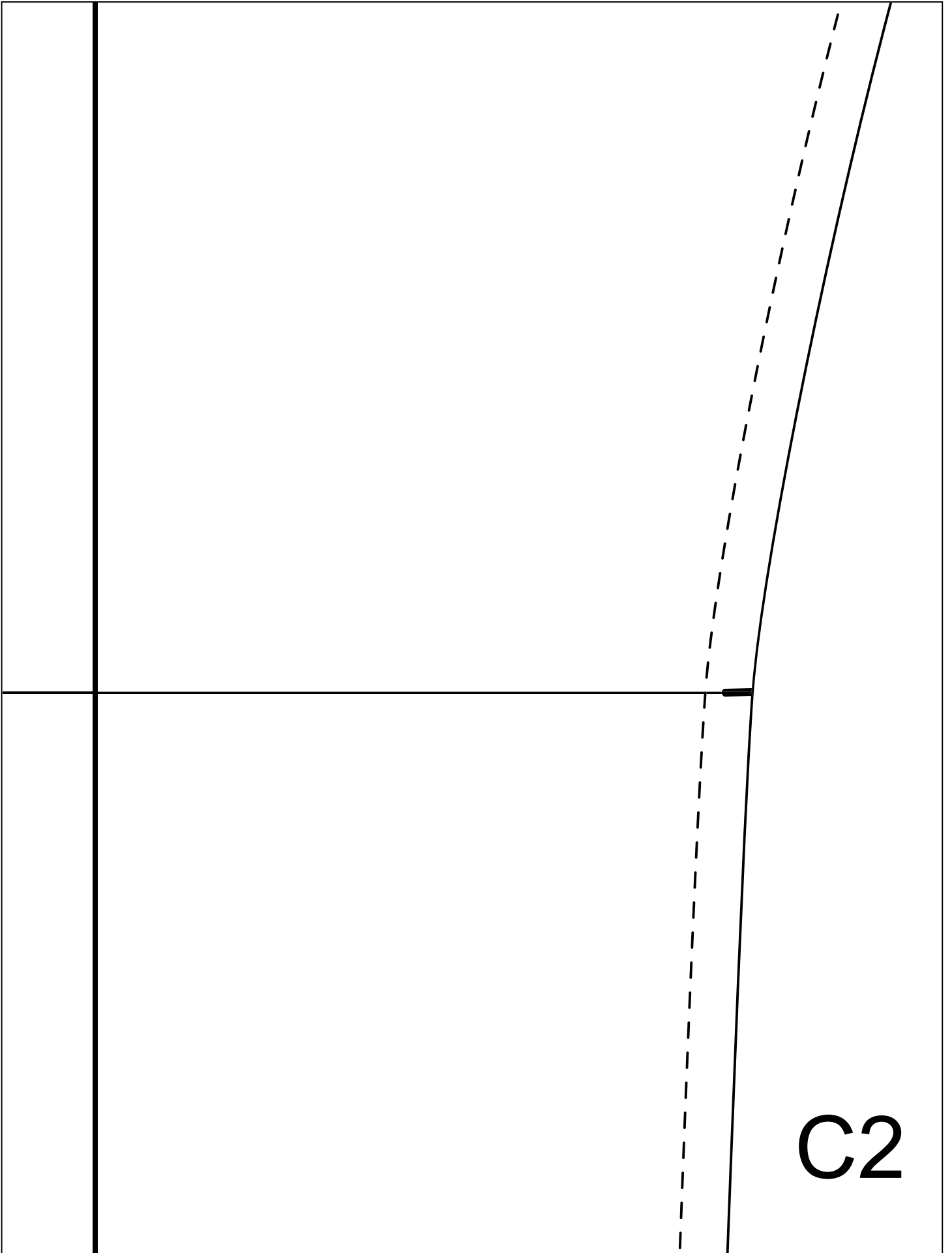


A diagram within a rectangular frame. On the left side, there is a solid black line and a dashed black line, both slanted upwards from left to right. The dashed line is positioned to the left of the solid line. A small red dot is located between these two lines, roughly in the lower third of the vertical span. To the right of the lines, the text 'B3' is printed in a large, bold, black font.

**B3**



C1



C2



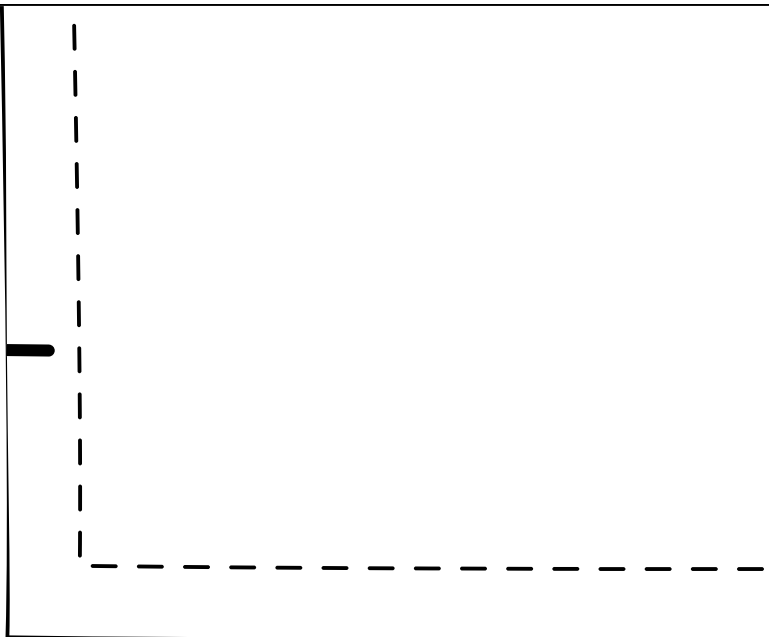


A diagram showing a large rectangle divided into two vertical sections. The left section is bounded by a solid vertical line and contains the text 'D1'. The right section is bounded by a dashed vertical line. The entire diagram is enclosed in a thin black border.

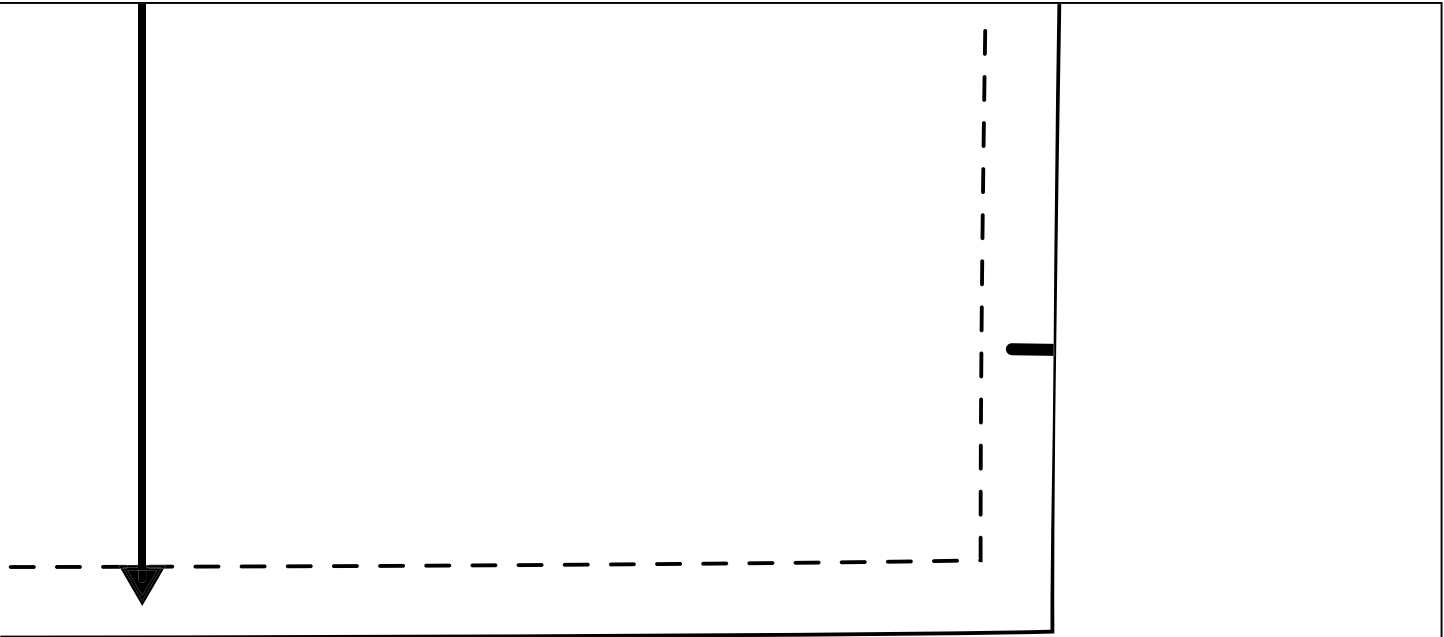
**D1**



D2



E1



E2