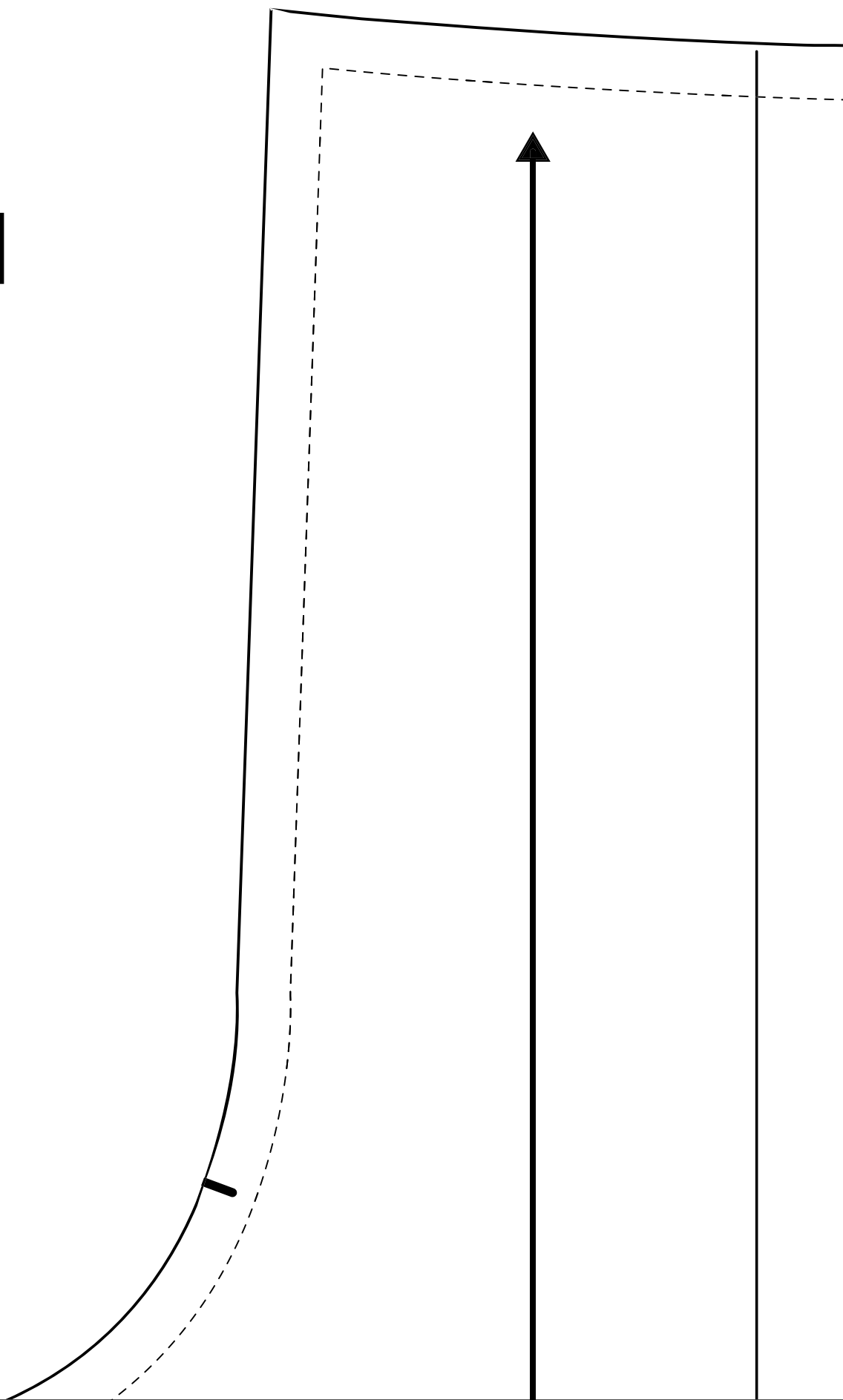
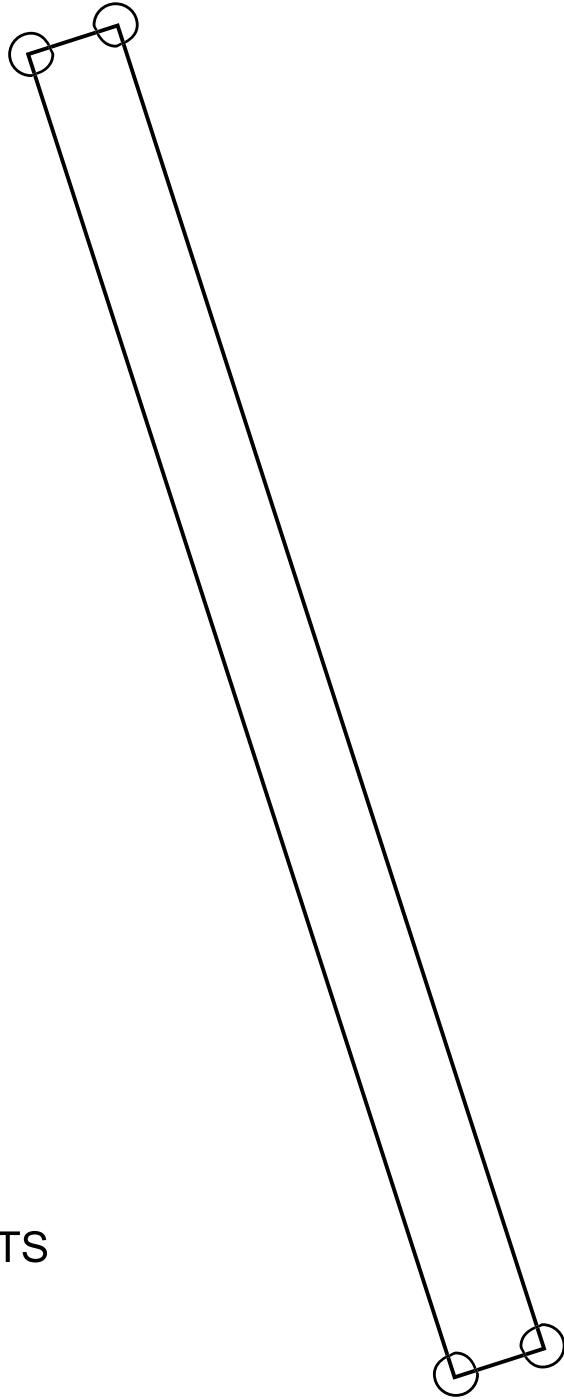


A1

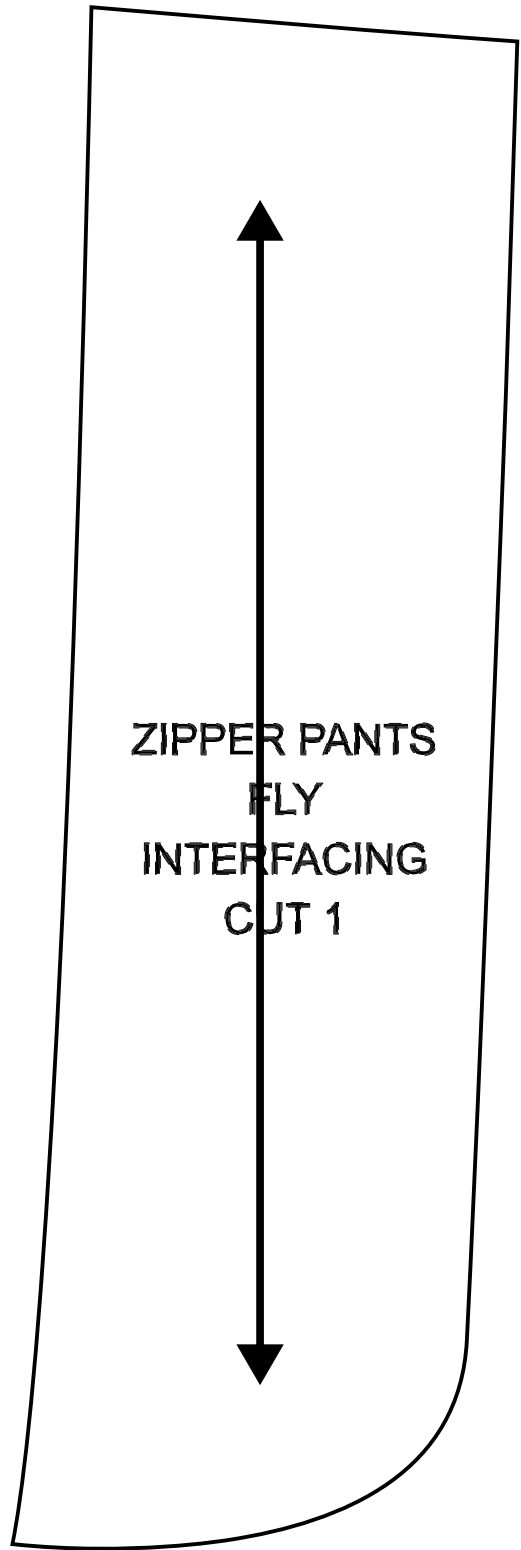
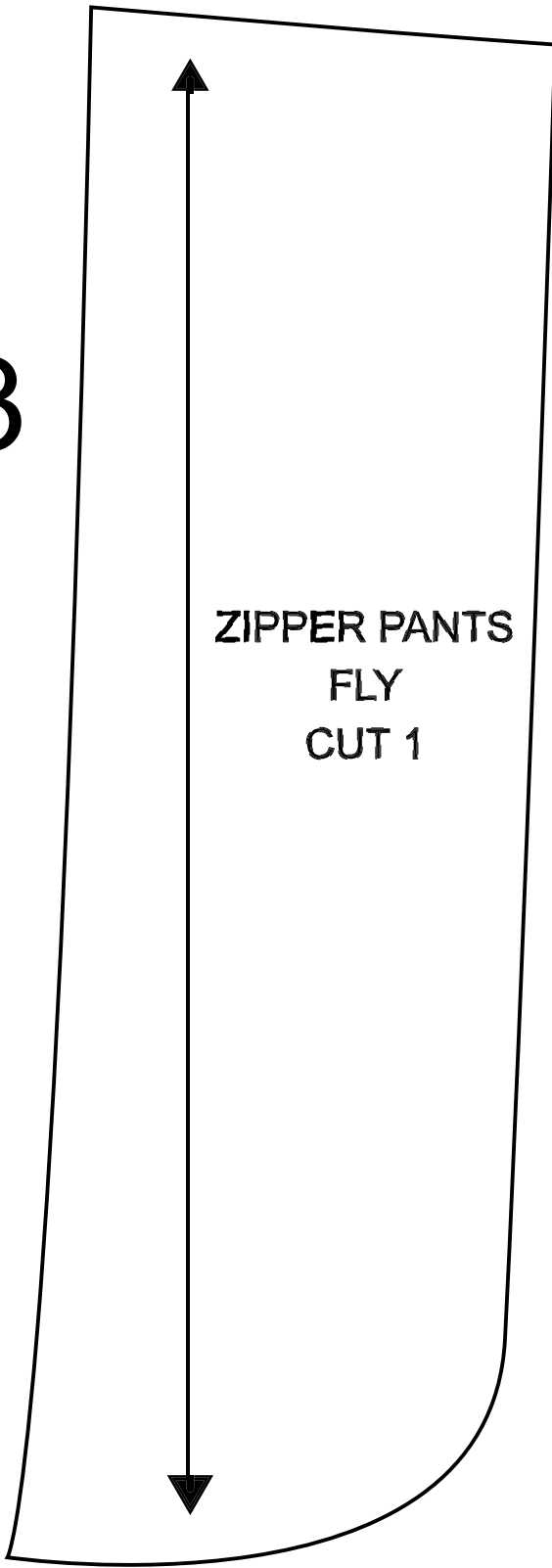


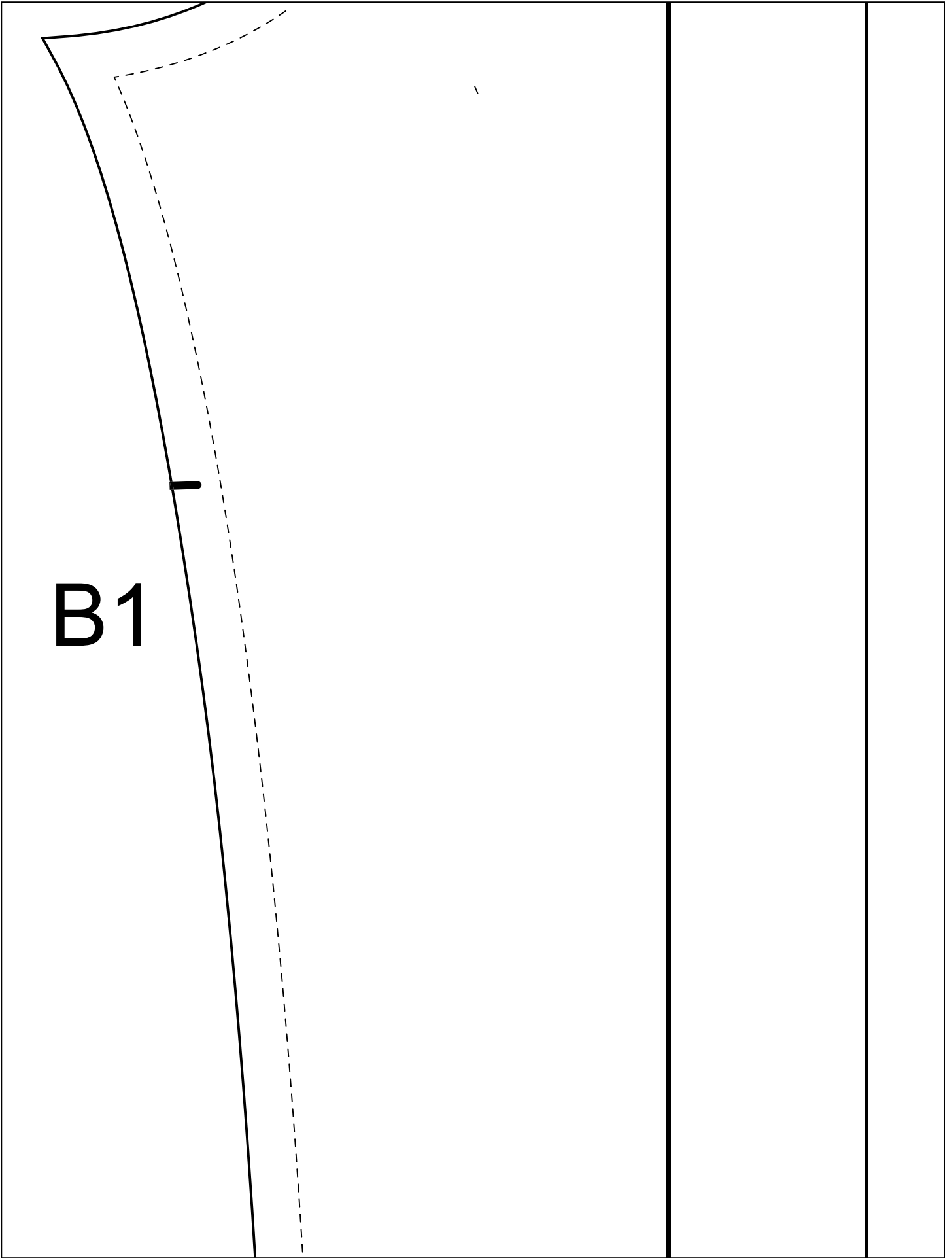
A2

ZIPPER PANTS  
FRONT  
CUT 2

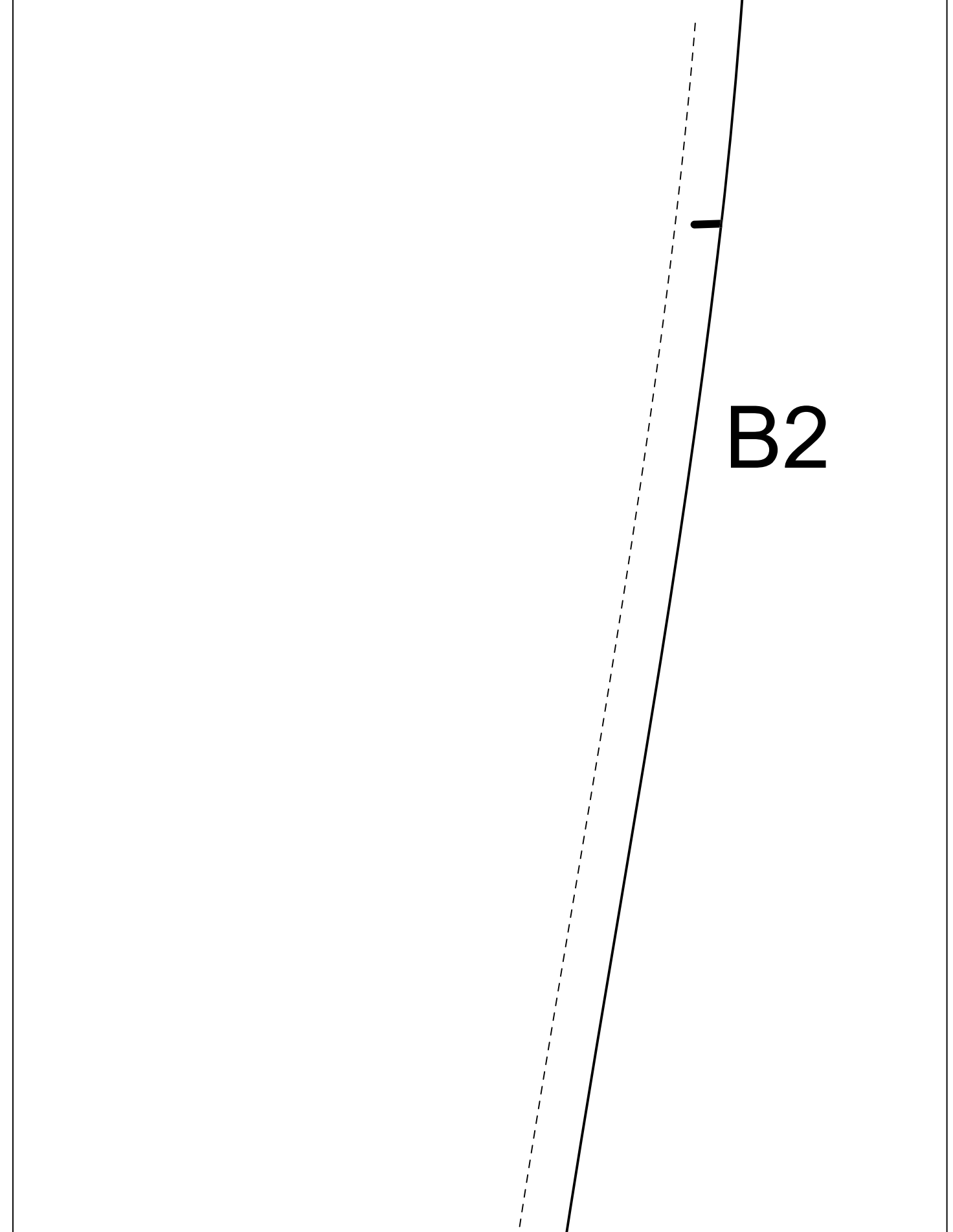


A3





**B1**



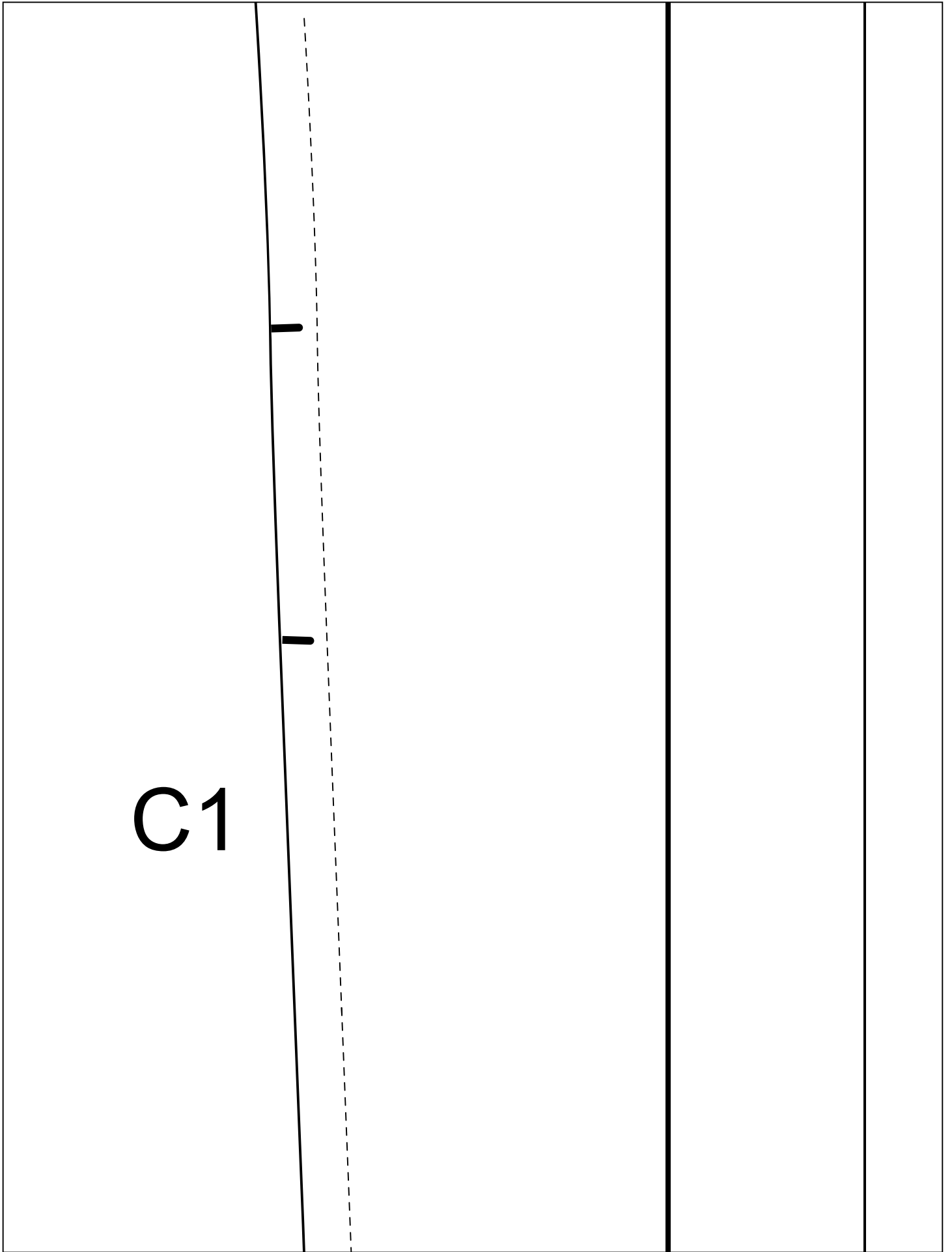
A diagram showing a solid black line tilted at an angle. A dashed black line is drawn parallel to the solid line, positioned to its left. A short, thick black horizontal tick mark is drawn perpendicular to the solid line, pointing towards the dashed line. The text "B2" is printed in a large, bold, black font to the right of the solid line.

**B2**

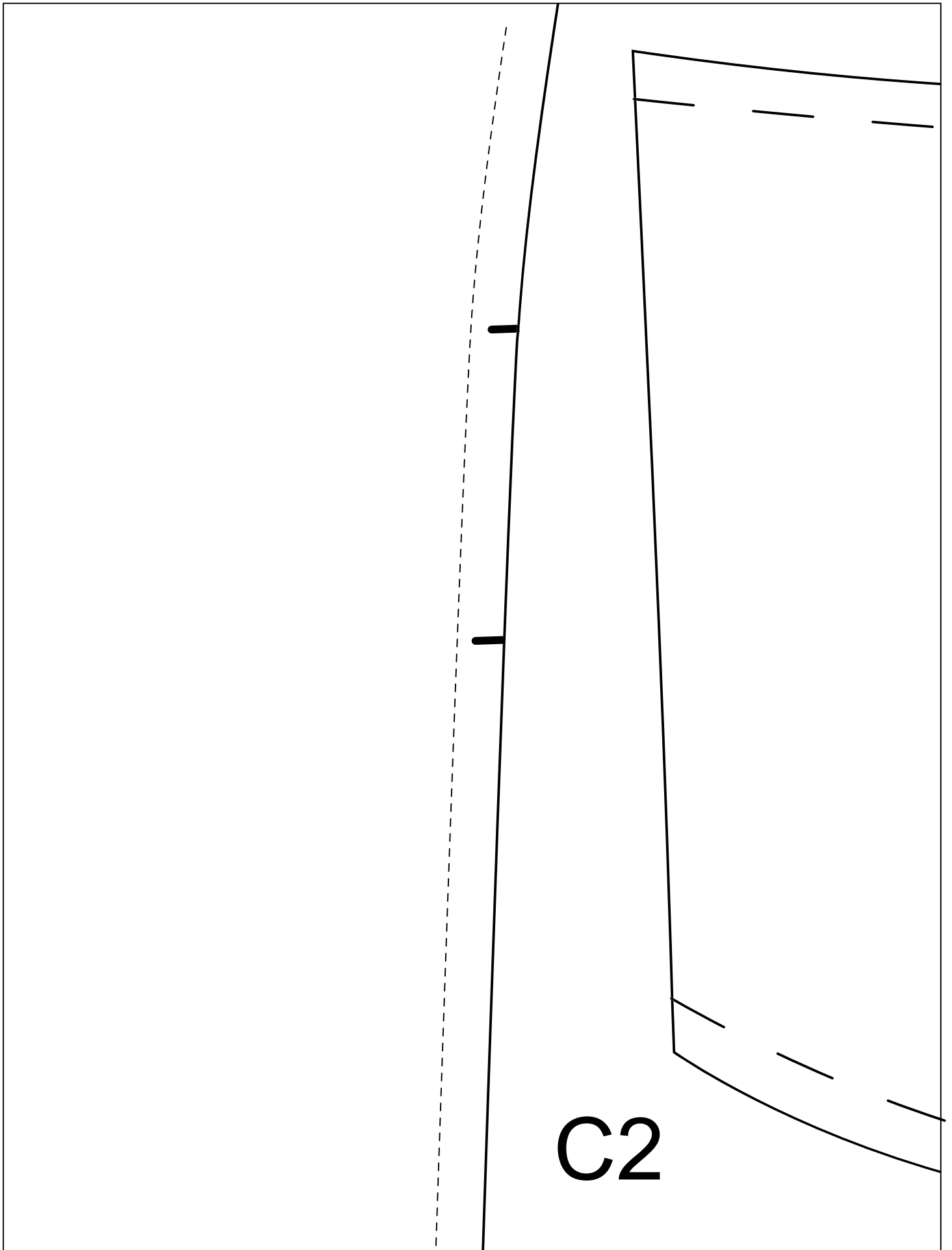
**ZIPPER PANTS  
FLY FACING  
CUT 1**

**B3**



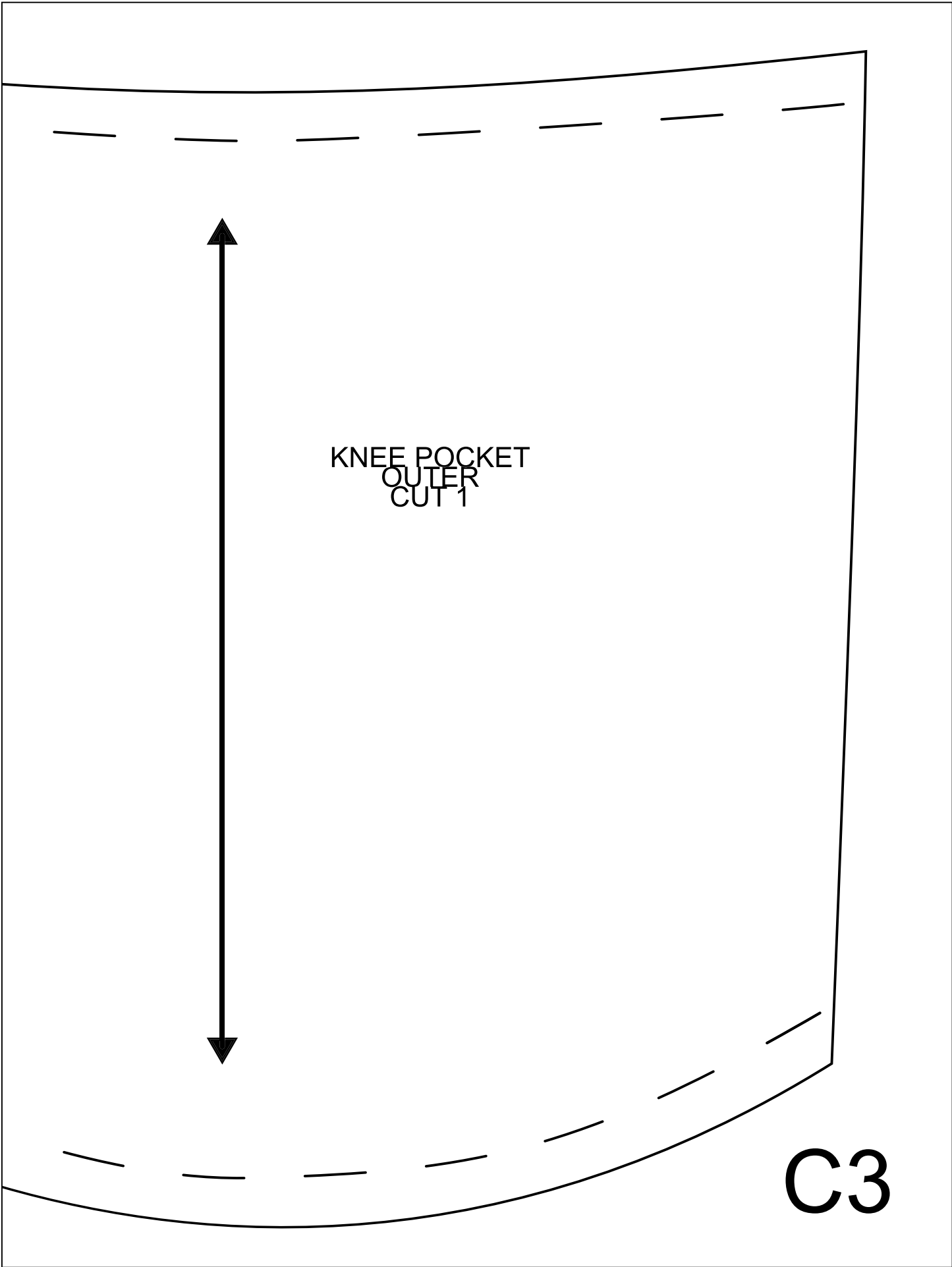


C1



C2



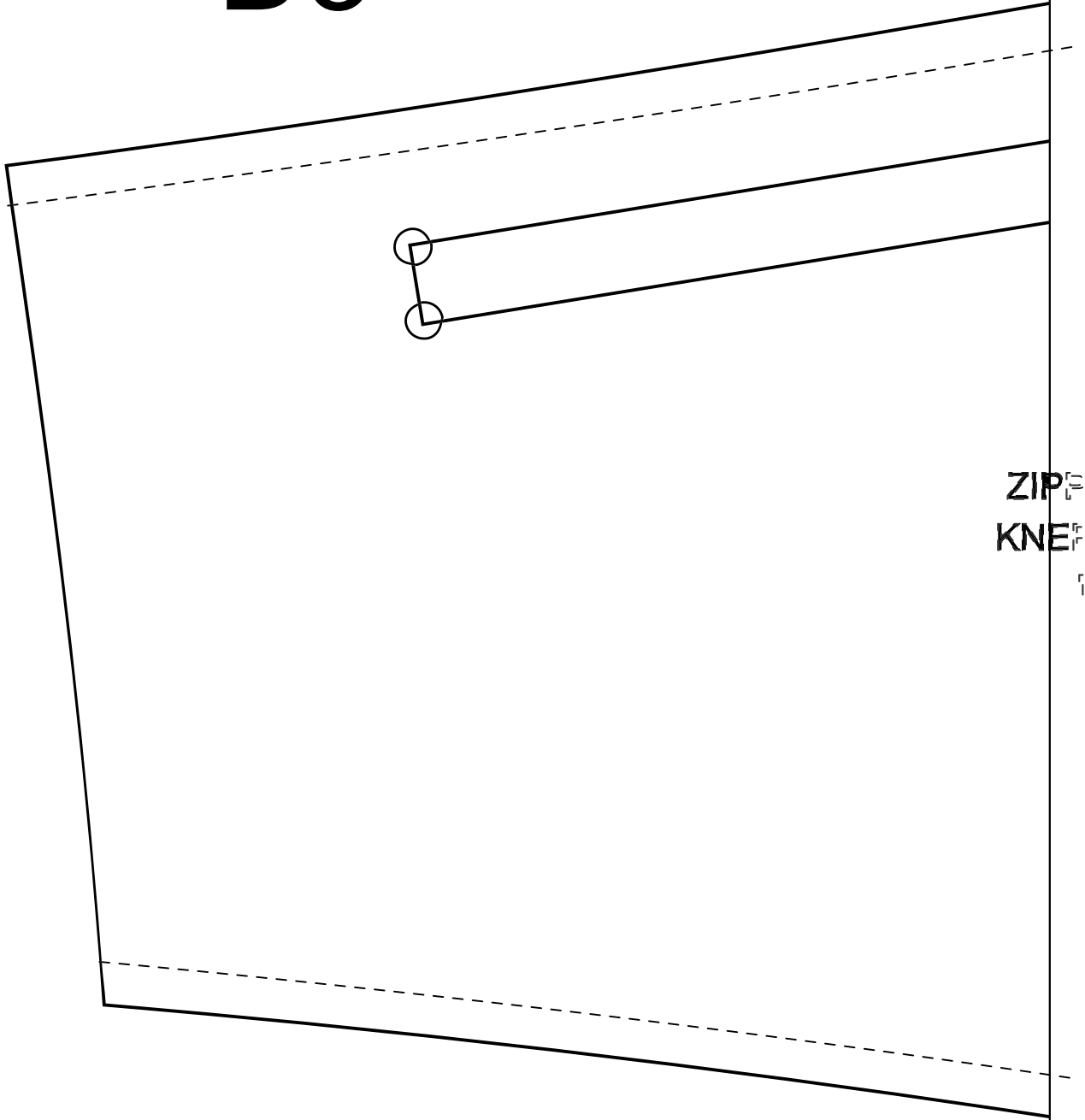


D1



D2

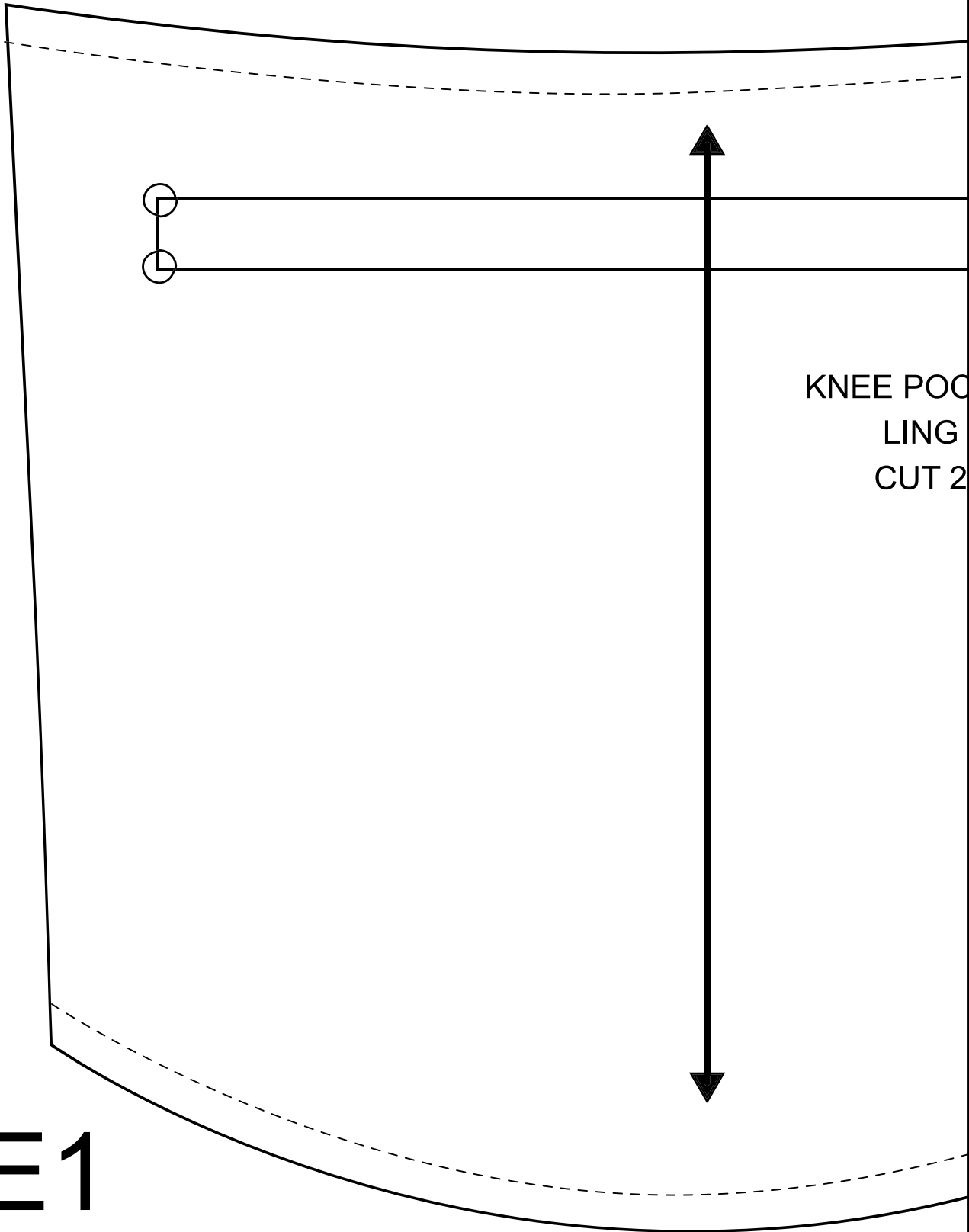
# D3



ZIP  $\frac{1}{2}$   
KNE  $\frac{1}{2}$   
r

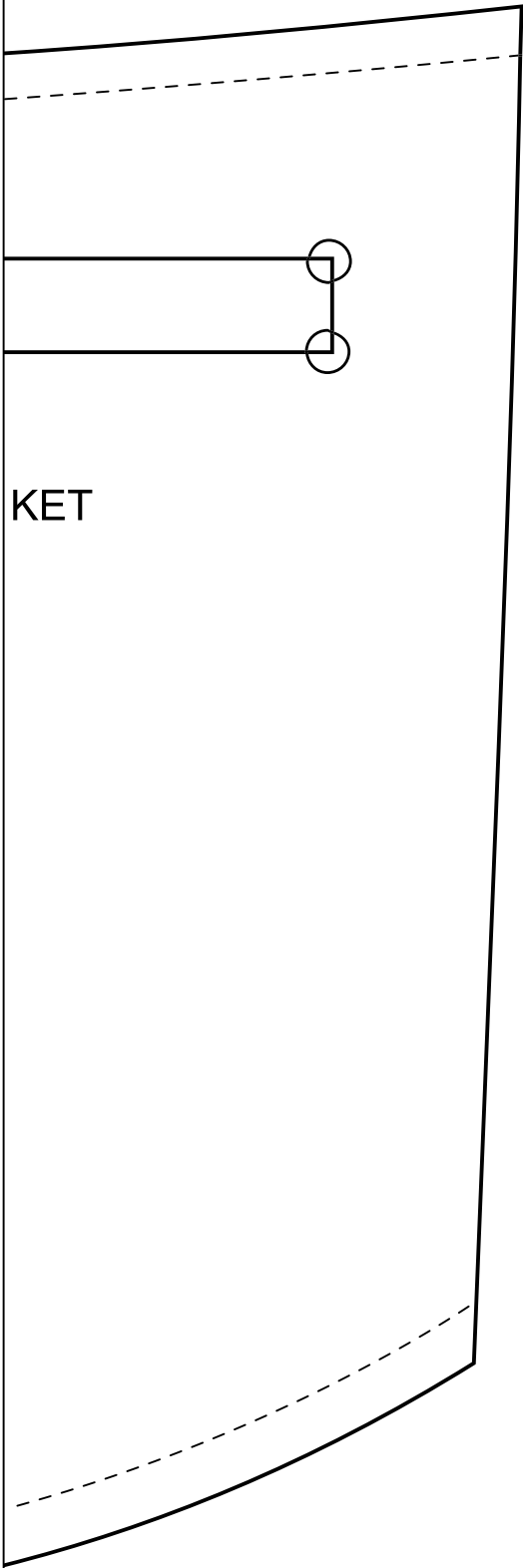
PER PANTS  
E POCKETS  
LINING  
CUT 4

D4



KNEE POCKET  
LING  
CUT 2

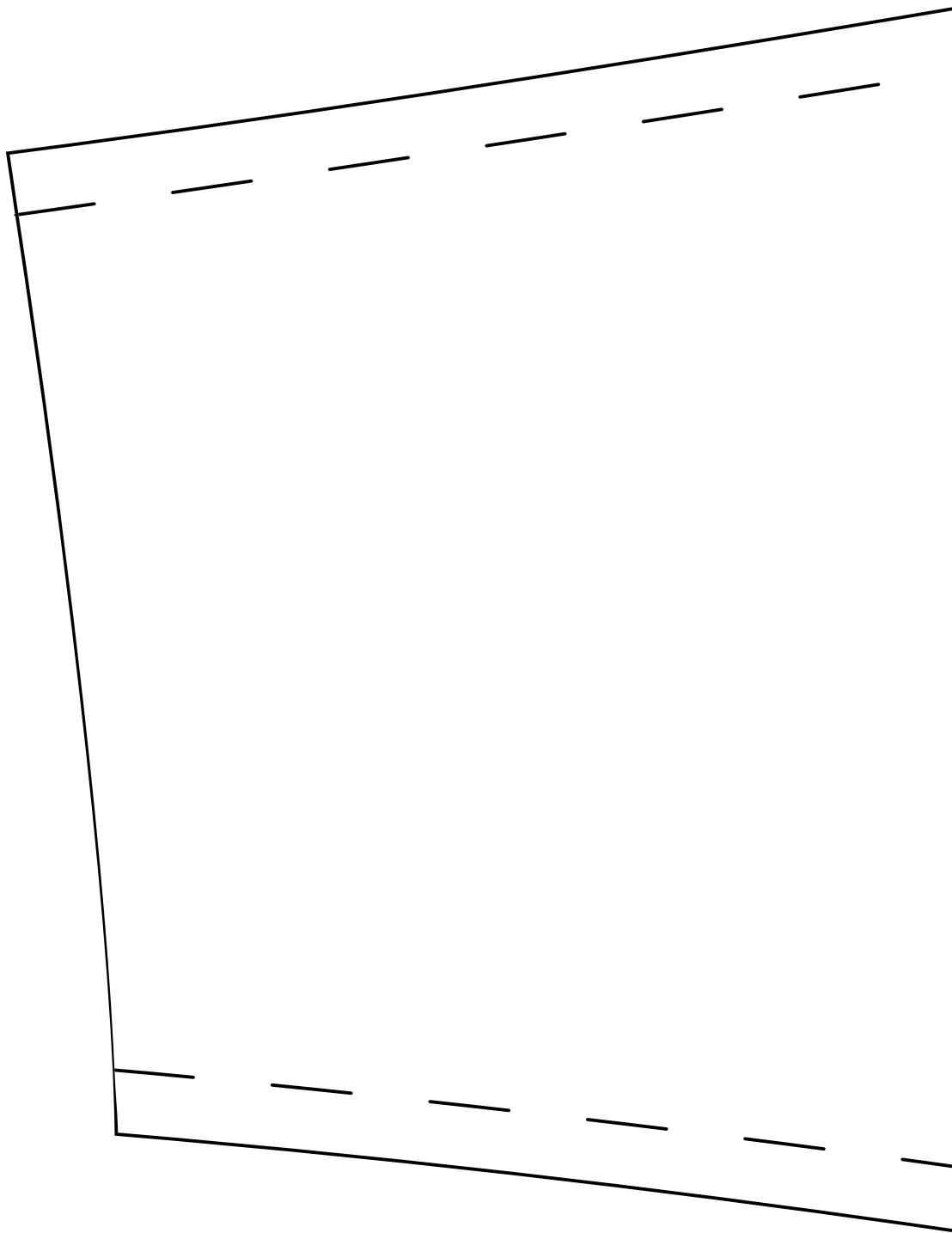
E1



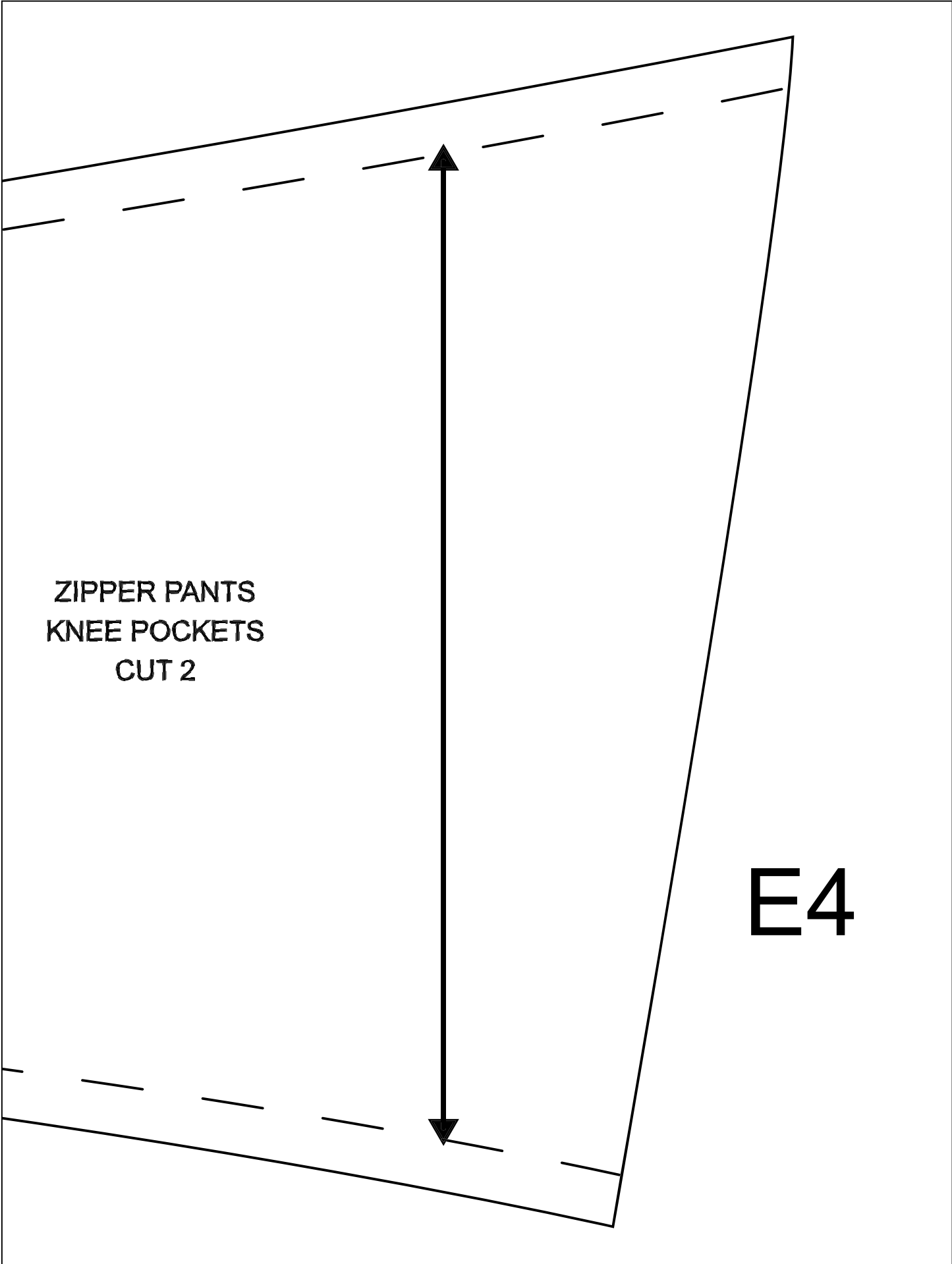
KET

E2

E3







ZIPPER PANTS  
KNEE POCKETS  
CUT 2

E4